

APENDIX A

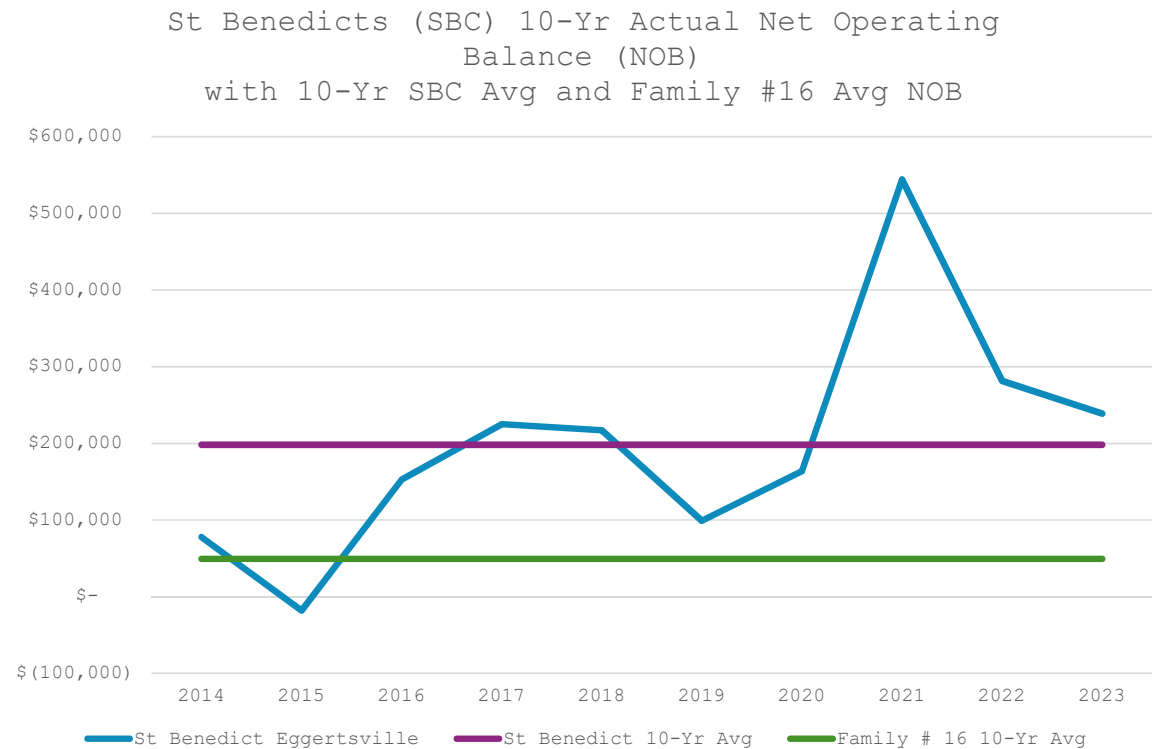
ST. BENEDICT FINANCIAL ANALYSIS



FINANCIAL DATA

Highlights

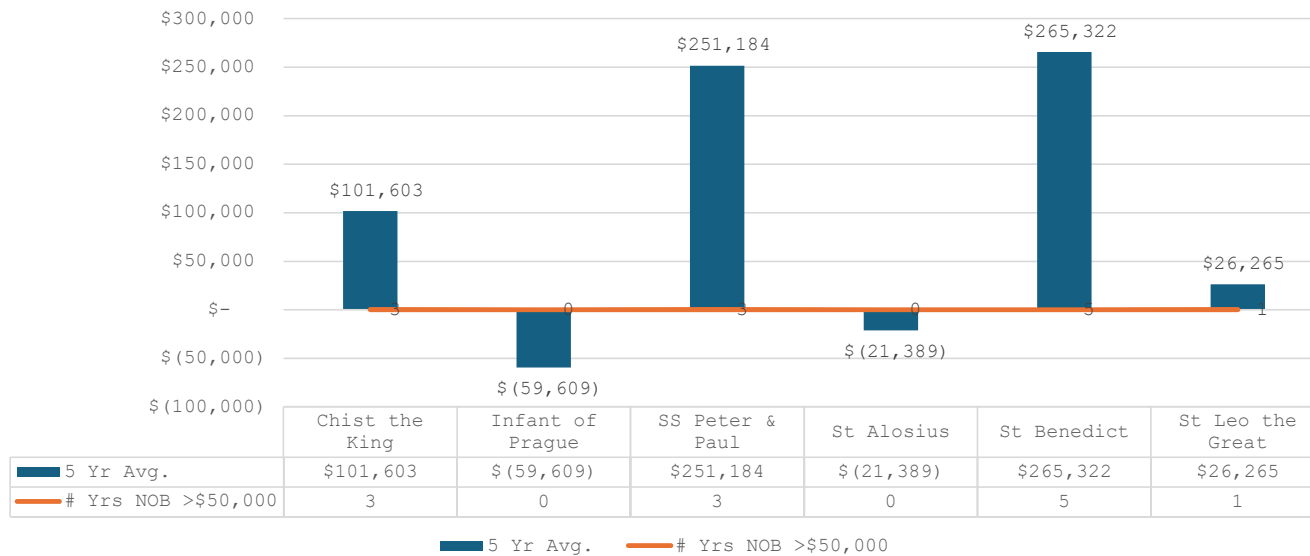
- Assets on hand totaling \$2.9 million
- Strong history of consistent operating surpluses
- 8/31/21 spike in Net Operating Balance (NOB) due to receipt of PPP and Cares Act Employee Retention Credits (ERC) of over \$470,000
- Annual NOB well above Family 16's 10 yr average of \$49,623
- Operating surpluses in 9 of the last 10 years



MID-TERM FINANCIAL STABILITY – 2019-2023

- Across the Family as a whole, the average 10-year positive Net Operating Balance (NOB) was \$49,263. For purposes of comparing the 5-year financial performance of each parish, the average annual NOB for each parish was determined. Secondly, the next test was set to determine the number of years that each parish exceeded the NOB average (say, \$50,000 for simplicity). The results by parish are as follows:

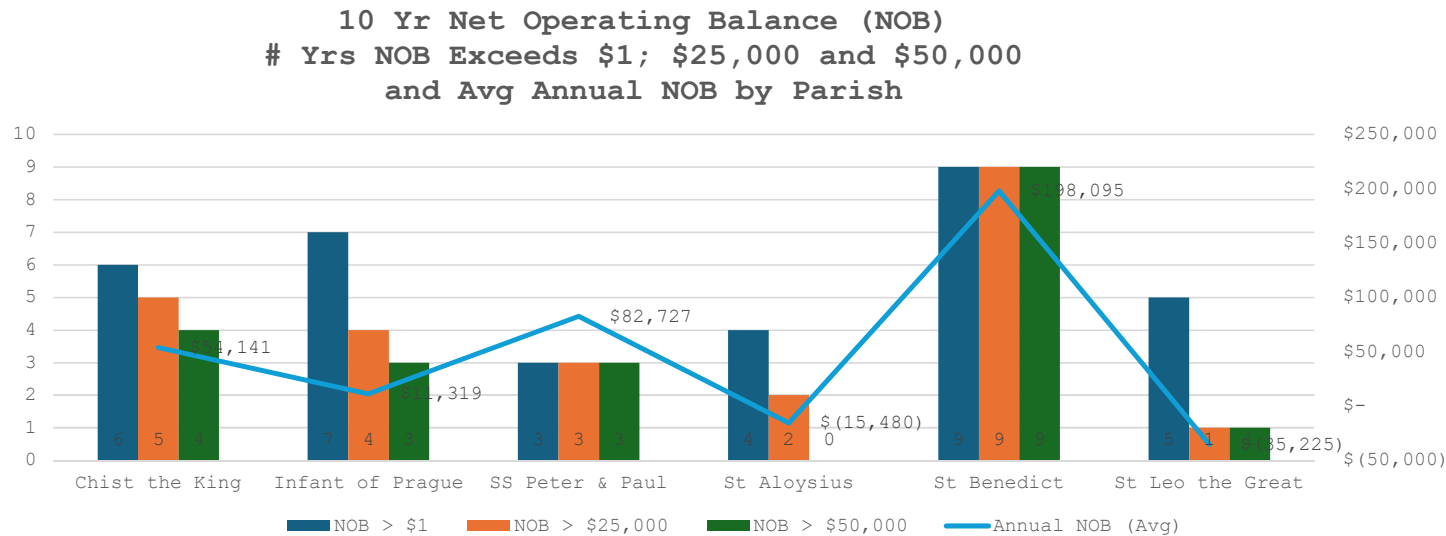
5-Yr Avg Net Operating Income by Parish
2019-2023



- St Benedict's was the only parish to achieve the \$50,000 threshold in each of the five most recent years. Christ The King and SS Peter and Paul achieve that measure in three of the past five years. St Leo's achieved the measure once in five years and Infant of Prague and St Aloysius did not achieve that measure at all in the past five years.

LONG TERM FINANCIAL PERFORMANCE 2014-2023

- Examining the 10-year trends yields a similar conclusion. The chart below is based on the Net Operating Balance (NOB) for each year from 2014-2023 for each parish with three tests:
- How many years did the parish achieve at least a breakeven NOB of \$1.00 or more over the past ten years?
- How many years did each parish achieve 50% of the average NOB (i.e. - \$25,000) in positive NOB?
- How many years did each parish achieve the average positive NOB of \$50,000 over the past ten years?
- Lastly, the chart below also shows the 10-year annual average NOB for each parish calculated using the information provided by the diocese.



- Conclusion:** St Benedicts achieved the threshold measure for the three scenarios above in 9 of the 10 years under each scenario and generated the highest average NOB at an average of \$198,095 over the ten year period. St Bens clearly has the strongest financial performance over the mid-term and long-term.
- Christ The King, SS Peter and Paul and Infant of Prague all generated a 10-yr positive NOB while St Aloysius had net losses averaging \$(15,480) per year and St Leo the Great had the poorest financial performance with a 10-yr average loss of \$(35,225) per year.

CONCLUSIONS

- Data Review

- The data the Diocese provided a Yes/No comparative analysis for each parish's financial capacity and its ability to fund ongoing repairs and maintenance and to fund parish infrastructure projects. The table is presented below:

	Growing Households & Contributors	House Contribution Rate Exceeds Inflation	Positive Net Operating Balance	Net Operating Balance Growing	Campus Infrastructure in good condition	Parish able to fund infrastructure repairs	Parish able to fund infrastructure upgrades
CTK	No	Yes	No	No	Yes	No	No
IOP	No	No	No	No	No	No	No
SSPP	No	Yes	No	No	No	No	No
St Al	No	Yes	No	No	No	No	No
St Ben	Yes	Yes	Yes	Yes	Yes	Yes	Yes
St Leo	No	No	No	No	No	No	No



CONCLUSIONS

- Data Review

- Given the financial, sacramental and the subjective assessments that St Benedict's parish has a campus in good condition and is the ONLY parish that the diocese determined has the ability to fund major repairs and infrastructure projects, the conclusion of the diocese to close St Benedicts parish does not match and is not supported by the data presented.

Parish	Rank Diocsean Raw Data (1 = Best)	Rank Diocsean Scoring (1 = Best)	Diocsean Recommendation	Recommendation Match Raw Data	Diocsean Recommendation Match RawKPIs Scores
Christ the King	4	3	Open	No	No
Infant of Prague	5	4	Close	Yes	Yes
SS Peter & Paul	2	5	Open	No	No
St Aloysius Gonzaga	5	6	Close	Yes	Yes
St Benedict	1	1	Close	No	No
St Leo the Great	3	1	Open	Maybe	Maybe

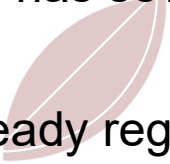


APENDIX B

ST. BENEDICT EVANGELISM AND MINISTRY IMPACT



EVANGELIZATION EFFORTS

- St. Benedict's is in process of re-engaging the disengaged through its youth
 - Sunday Mass at 10am features a Children's Liturgy to drive school engagement
 - Joint Parish School Committee formed. Developing calendar of events - Back to School Parish Picnic, Advent Mass with Santa, St. Patrick's Day Mass / Parade / Dinner
 - Christian Ministry Service Project at school and within Generations of Faith
 - St. Benedict's has developed a relationship with students from the University of Buffalo and Daemen University and is building upon it.
 - St. Benedict's has a Young Adult Professionals Group that meets monthly and has several UB students already participating.
 - St. Benedict's has a group of 10-15 students from Daemen University that already regularly attend 10am Mass Sunday. Father Moses is working to grow participation.
- 

CONGREGATION DATA

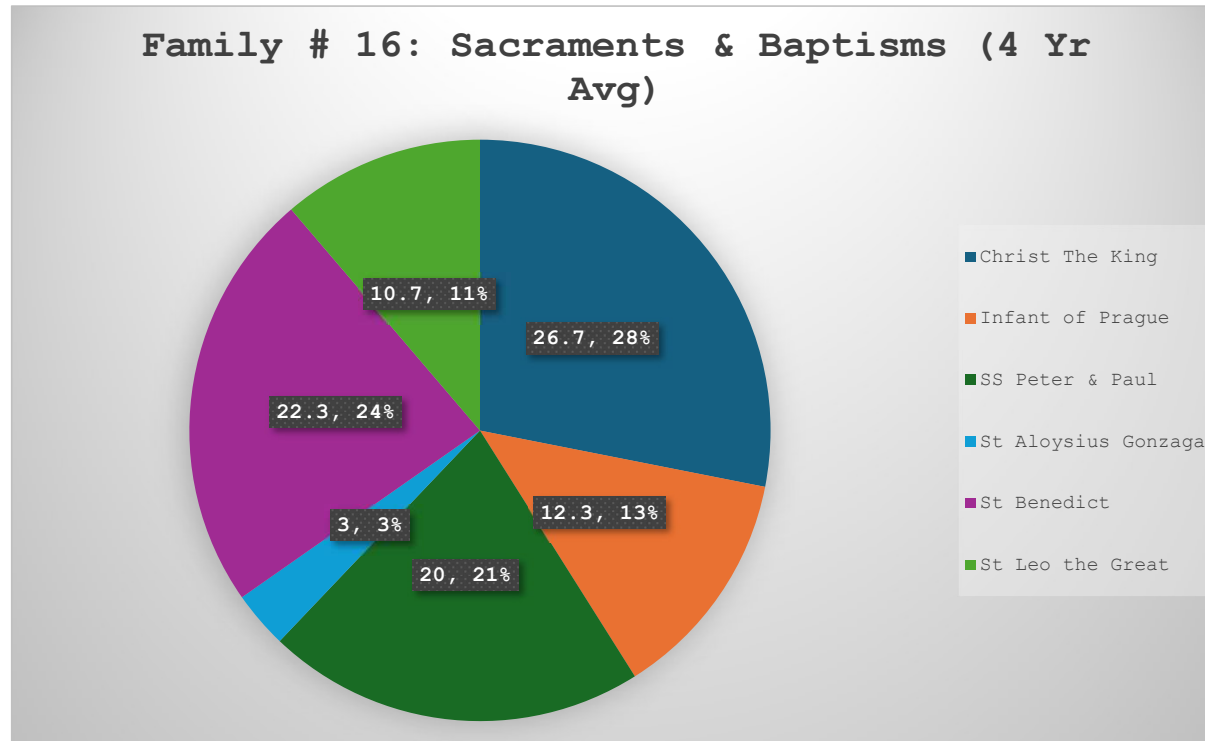
- Highlights
 - 1348 registered households, data maintained annually
 - 934 contributing households, highest in Family 16
 - 2nd highest average weekly Mass attendance in Family 16 at 450 per weekend
 - Sacraments trending upward. Some counted at other parishes.
 - School enrollment at 436 students for Fall 2024. Up 20% in 3 years
 - Generations of Faith enrollment at 145 students, 70% St. Benedict's
 - Active, effective Social Media Ministries
 - 1300 Facebook followers, 470 Instagram
 - 12,600 unique visitors to St. Benedict's website YTD, 42,500 watched Mass YTD
 - Email Newsletter – 1942 subscribers, 52 newsletters sent YTD



CONGREGATION DATA

- **Sacramental Activity:**

- Based on the information provided, the sacramental activity in Family #16 is concentrated at three parishes – (in order: CTK, St. Benedicts and SSPP) representing 72.6% of total sacramental activity. Following is the Family #16 summary:



CONGREGATION DATA

- **Sacramental Activity**

- Sacramental activity at St. Benedict's is alive and thriving due to the school collaborating alongside our public school children. Candidates for all sacraments join each other with the general population of the parish for a weekend celebration of Mass and remain in the church or church cafeteria for continued faith formation. The parish is electrified as old and young witness each other and the importance of Jesus Christ in their lives. This is magnified by one of our marquee events of the year, where our Rosary Altar Society comes to the reconciliation retreat to meet, pray with, and grow with our candidates as they participate in a prayer scavenger hunt. There is a lasting impact connecting the young with the old and is purely intergenerational. Through this experience the old gain hope for the future and the young witness devotion, sacrifice, and community that comes with a lifelong approach to sacramental preparation. This is achieved with constant fostering of relationships between parish and school.

- **Sacramental Figures Fiscal YTD (9/2023 – 7/2024)**

- **Baptisms – 23**
- **First Reconciliation – 39 (some students were directed to St. Leo's based on date)**
- **First Communion – 44 (some students were directed to St. Leo's based on date)**
- **Confirmation – 19, 29 projected for next year (some students were directed to St. Leo's based on date)**
- **Weddings - 5**
- **Funerals – 26**
- **New Families Registered – 58 (163 people)**



Saint Benedict's Ministry Impact		
Ministry Name	Description	# of People Impacted
Ash Wednesday	For many years St. Benedict's has offered extended hours for the reception of ashes. In 2024 we expanded the hours to 13 hours, included mass at 7 am and Noon. Not included the two Masses (both of which were heavily attended), St. Benedict's welcomed approximately 1,500 people for ashes. Each person was welcomed, prayed with, received ashes, and was offered written materials to read to help them in their Lenten journey. Priests were also available during this time to hear confessions and consistently had lines.	1500
YAP	Young Adult Professional group that was founded at St. Benedict's and has since expanded to all of WNY. YAP holds a yearly retreat and includes a popular mentorship program. YAP currently uses the rectory backyard for their popular Burgers, Bonfire, and Brew nights. YAP has received numerous grants from private businesses as well as from the Foundation. YAP has produced 3 lectors, 4 catechists, as well as cantors, and ushers.	40
Tigers Den Food Pantry	Hosted at St. Paul's Lutheran across the street. St. Benedict's founded the food pantry jointly with St. Paul's to support the needs of families with children in the 14226 zip code. St. Ben's parishioners continue to support the food pantry through donations of food and paper products.	
Lenten Sacrifice/Food Drive	During the weeks of Lent families are encouraged to bring a canned food item with them to Mass as an act of Lenten sacrifice. At the end of Lent all food items are donated to Tiger's Den.	Tied to Tigers Den
Walking the Talk	A program designed for teen parishioners that immerses them in a multitude of service, prayer and reflection around finding God in the work. Its goal is to inspire true missionary discipleship, give the teens a greater connection to Christ and do it in a safe community. Service includes pantry and soup kitchen work, care for creation and more. Both the spiritual and corporal works of mercy are discussed, the teens are connected to scripture and time is allotted for personal and group reflection.	18 teens in 7/2024
St. Vincent de Paul	Conference makes home visits in the inner city to assist with food, clothing, furniture, appliance needs, and to make referrals to other agencies. Conference also cooks at Little Portion Friary once per month for 30 homeless people. Also a group of people go to the discount store once per month to sort and hang cloths	30
Refugee Resettlement	In year's past under Fr. Mock, St. Benedict's parish assisted with the resettlement of multiple refugee families. This ministry was stopped when Msgr. Zapfel became pastor and the prior Presidential Administration cut back on immigration.	
Parish Picnic	Includes an outdoor Mass followed by a picnic. Includes a bounce house for kids as well as games. This is totally free, open to all parishioners, and is one of the many ways the parish gives back to the parishioners. Went from 5 volunteers two years ago to 16 last year including school, Generations of Faith, and parish volunteers.	300
Feast of St. Benedict	Held annually on a Sunday in July. This celebration includes Mass at 10 am followed by a brunch (breakfast pizza and pastries) that is held outside in front of the church. Attended by many young families. Number of volunteers doubled in the past year. This is another way the parish not only celebrates its namesake, but also gives back to the parishioners.	250


Saint Benedict's Ministry Impact		
Ministry Name	Description	# of People Impacted
Ecumenical Service	Interfaith service that was brand new in 2024. The service was very well attended and there has been interest in ongoing dialog and services. Fr. David is working with the pastor of St. Paul's Lutheran Church across the street.	120
Volunteer Appreciation Dinner	Free dinner to thank all volunteers to the parish. Use to be held annually, was stopped due to Covid, and was brought back this year. Another way the parish gives back to parishioners and anyone who volunteers their time for the parish.	80
Wedding Cards	Same concept as above; however, they are sent to newly married couples. The cards congratulate the newlyweds, welcomes them to the parish, indicates the parish will be praying for them, and that we are here to walk with them in their faith journey.	4 YTD
Baptism Cards	For the past several years the Pastoral Council has sent a card to the family of all newly baptized. The card congratulates the family and welcomes the baptized, indicates the parish will be praying for their family, and that we are here to walk with them in their faith journey.	22 YTD
Gardening	St. Benedict's parishioners don't just support the parish through the offertory! All of the annuals that have been planted around the parish both in the ground and in pots were donated by parishioners. The pots were mostly, but not totally, planted by GOF families and the annuals in the ground were planted by volunteers.	4 Members Entire parish and community benefit from the plantings
Saints Garden	This is a brand new garden behind the rectory that is to be dedicated to female saints once a few finishing touches are complete. The garden was created completely by a volunteer who also donated all of the plant material for the garden.	1 Member Entire parish and community benefit from the garden
Stephen Ministry	Six ministers have completed 75 hours of comprehensive training, including 3 that have completed a full week of onsite training.	11 over the past three years
Pocket Hugs	Started in 2024 by Kathy Halliday. These are the knit hearts that are at the exits of the church. They include a note that they are to be kept in your pocket to remind you that God loves you. They have been wildly popular, especially with kids.	426
Prayer Shawls	Ministry started in 2015 by Kathy Halliday. Kathy makes each prayer shawl and ensures they are distributed to anyone in need.	231
Prayer Squares	Started in 2024 by Kathy Halliday. These are knit squares with a cross on them that you can hold close to you while you pray. They have been wildly popular, especially with kids, helping to remind them to pray.	226
Bicycle Blessing	Held earlier this spring, this was a joint effort with St. Paul's Lutheran Church, across the street, to bless children's bicycles on a Sunday afternoon.	10
Movie Nights Under the Stars	This is a new initiative that is scheduled for this summer. This will include showing movies in the rectory backyard. First sessions are scheduled for teens, with additional sessions to be scheduled for families.	

APENDIX C

ST. BENEDICT FACILITY INSPECTION AND MAINTENANCE REQUIREMENTS



INFRASTRUCTURE / CAPACITY

- The Diocesan process for facility evaluation was both superficial and entirely subjective, i.e. an older building does not mean it is inferior to a newer building or that it needs significant repair.
 - The St. Benedict campus is very well maintained and we have taken care to insure its critical structures (roof, boilers, HVAC, windows and foundation) remain highly functional. Submitted with this presentation is our inspection and maintenance checklist which details the ages of critical components and creates a schedule of maintenance services for those components.
 - St. Benedict's Church has the largest seating capacity (900) of any parish in the family, making it ideally suited for handling large events, e.g. sacramental ceremonies, graduations, inter-denominational services, etc.
 - St. Benedict's has a large and easily accessible series of parking lots, including a handicapped lot, to accommodate any size crowd or gathering. St. Benedict's has more parking spots (178, 9 handicap) versus CTK (89,6) and SSPP (136, 10).
 - Efforts to make the church building more accessible have been ongoing for years, including installation of a handicapped ramp from our parking lot and exploring the feasibility of an elevator to better open other spaces (2011). Recent efforts include:
 - Installation of two handicapped bathrooms for the church – approved by the town and awaiting Diocesan approval.
 - Three proposals currently being reviewed for immediate installation of stair lifts for handicap access to our school cafeteria at both the parking lot and church entrances.
 - Hiring of a consultant/architect to study our campus to make recommendations for further accessibility improvements.
 - Our school building has not yet reached its full capacity, and could accommodate an additional estimated 50 students, despite its projected enrollment of 436 this Fall.
- 

<u>AREA</u>	<u>LAST COMPLETED</u>	<u>NEXT DUE</u>
<u>STRUCTURAL</u>		
• Roof	Various sections 2005 -2023	Inspect visually annually; detailed inspection every 3-5 years
• Walls	Church pointed 2022-23; 2018 for school and ramps	Visual inspection; repair as needed
• Floors	Church floor patched in 2022; selected school floors replaced in 2022-23	Visual Inspection; repair/replace as needed. Church carpeting in poor condition
• Gutters & Downspouts	Last repairs apprx. 10 years ago, & in 2021	Visual inspection; generally good condition; missing downspouts near window #25
• Doors	Church doors refinished in 2022; doors repaired 2020; cellar door replaced in 2023	Visual inspection; church doors and frames in fair condition. Contractor retained to improve.
• Windows	School windows replaced 2012-2015; Rectory windows replaced & glass block added to basement windows in 2021	Visual inspection; repair as needed Church stained glass windows require evaluation and repair as needed
• Stairs & Steps	Major repair & re-pointing to church & school in 2015 & 2019 school steps repaired 2022; railings repaired & repainted 2021	Visual inspection annually
• Outdoor lighting	Housings painted 2023; LED in outdoors in 2020	Visual inspection annually;
• Indoor Lighting	CFL in church 2018+/-; School = ?	Convert to LED; Visual inspection

HVAC & BOILERS

- Air Conditioning Last upgrade = ?? Annual Visual; Detailed inspection every 3-5 years; Annual maintenance under contract
- Boilers Various maintenance through 2023; Diocesan insurance in place. Boilers apprx. 30 years old Maintain/Repair/Replace as necessary
See Boiler file for insurance. Annual maintenance under contract
- HVAC Controls Both replaced in 2023 Repair as needed; heat and A/C not combined
- Steam Traps Replaced 2018-2020 Inspect/service annually; replace as needed

PAINTING & FINISHING

- School Completed halls and classrooms in 2022 As required
- Church Last completed 2018 +/- radiator covers refinished In 2023 As required
- Rectory Last completed ?? Needs repainting as part of a major overhaul
- Catholic Charities Last at renovation As required

TECHNOLOGY & ELECTRICAL

- Technology Upgraded/added 2020 to 2023 in church and cafeteria; school bells, clocks and phones upgraded in 2018; church bells replaced in 2022 New technology service hired in 2023; repair as needed

BATHROOMS, FIXTURES & FOUNTAINS

- Bathrooms Boy's bathroom in school completely renovated in 2023; girl's bathroom upgraded in 2023. Church public bathroom under study for replacement
- Fixtures Most replaced upon renovation Many old fixtures still present but still functional; need to replace these in the near future
- Water Fountains Replaced in 2019 Visual inspection at least annually

LANDSCAPING, GROUNDS AND LOTS

- Landscaping Annual contract supplemented by garden club Currently Piccone; review annually
- Snow Removal Annual contract Currently John Argo and Matt Neuman; review annually (possibly Gary Adams)
- Parking Lots Sealed & patched In 2023 Visual inspection; requires resealing patching every 3-5 years
- Statuary Sealed painted in 2023 Visual inspection; Mary statue on Main street has a 10-year usable life Visually inspect at least annually
- Handicapped Lot Re-paved 2023 Visual inspection annually; requires lighting under consideration.
- Sidewalks Re-paved 2023 Visual inspection at least annually
- Fencing Replaced rectory fence in 2022 Visual inspection at least annually

SPECIAL PROJECTS & SPACES

- Playground All new June 2024 Requires annual maintenance and frequent inspection
- Garage Patch work done In 2023 Still leaking; more roof work required
- Asbestos All encapsulated as of 2023 Caution required when undertaking additional renovation
- Cafeteria Furniture upgraded In 2020; all appliances beyond usable life; cabinets painted 2017 Appliances continue to function but present energy and safety issues

APENDIX D

ST. BENEDICT CHURCH
BATHROOM ARCHITECTURAL
DRAWINGS



GENERAL NOTES

- CONSTRUCTION SHALL CONFORM TO THE LATEST EDITION OF BUILDING CODE OF NEW YORK STATE AND HIRE SAFETY CODE / RELEVANT SECTIONS OF THE N.Y.P.A. / NIST STANDARDS FOR ACCESSIBLE AND USABLE BUILDINGS AND FACILITIES, AND OSHA SAFETY AND HEALTH STANDARDS, & ANY LOCAL CODES BECOME MORE RESTRICTIVE THAN THE MINIMUM LISTED.
- THE G.C. SHALL OBTAIN AND PAY FOR PERMITS AND INSPECTIONS REQUIRED BY PUBLIC AUTHORITIES GOVERNING THE WORK.
- CONSTRUCTION METHODS, TECHNIQUES AND CRAFTSMANSHIP ARE THE RESPONSIBILITY OF THE GENERAL CONTRACTOR. G.C. SHALL VERIFY ALL DIMENSIONS AND CONDITIONS IN THE FIELD. CONTACT ARCHITECT IF MAJOR DISCREPANCIES OCCUR BETWEEN DRAWINGS AND EXISTING CONDITIONS.
- THE DRAWINGS, SPECIFICATIONS AND OTHER DOCUMENTS FOR THIS PROJECT ARE INTENDED TO COVER THE DESIGN/INTENT OF THE PROJECT. THE CONTRACTOR WILL COMPLETE THE SCOPE OF THE PROJECT IN COMPLIANCE WITH THE OWNER AND DESIGN TEAM. ALL CONTRACTORS AND ALL SUB-CONTRACTORS ARE RESPONSIBLE FOR COMPLIANCE WITH ALL INFORMATION IN THE CONSTRUCTION DOCUMENTS.
- ANY CHANGES TO THESE DRAWINGS, SPECIFICATIONS AND OTHER DOCUMENTS WILL ONLY BE DONE BY A CHANGE ORDER THAT IS APPROVED BY THE ARCHITECT.
- THE CONTRACTOR'S ATTENTION IS DIRECTED TO THE FACT THAT DUE TO THE NATURE OF THE PROJECT, THE EXACT EXTENT OF THE WORK CANNOT ALWAYS BE ACCURATELY DETERMINED. THESE DOCUMENTS AND ALL DIMENSIONS SHOWN ON RECORD DRAWINGS AND RIFED FIELD OBSERVATIONS AND OTHER INFORMATION AVAILABLE AT THE TIME. THE CONTRACTOR IS ADVISED THAT SAID DRAWINGS MAY NOT ACCURATELY REFLECT AS-BUILT CONDITIONS. ACCURATE FIELD MEASUREMENTS SHOULD BE MADE PRIOR TO THE REMOVAL OF MATERIALS. DISCREPANCIES SHALL BE REPORTED TO THE ARCHITECT PRIOR TO THE COMMENCEMENT OF THE WORK AND SHALL BE REFLECTED ON THE CONTRACTOR'S SHOP DRAWINGS.
- THE CONTRACTOR IS REQUIRED TO INSPECT THE PROJECT SITE IN ORDER TO DETERMINE THE EXTENT OF THE REQUIRED WORK. THE CONTRACTOR SHALL ALSO PERFORM THE WORK IN ACCORDANCE WITH THE FIELD CONDITIONS. ADDITIONAL TO CONSTRUCTION DETAILS AND WORK QUANTITIES MAY BE REQUIRED. THIS INSPECTION SHALL BE COMPLETED PRIOR TO THE SUBMISSION OF ANY PROPOSAL TO COMPLETE THIS PROJECT. INSPECTION TIMES SHALL BE COORDINATED WITH THE OWNER. DISCREPANCIES SHALL BE REPORTED TO THE ARCHITECT.
- REVIEW DOCUMENTS VERIFY DIMENSIONS AND FIELD CONDITIONS AND CONFIRM THAT WORK IS BUILDABLE AS SHOWN. REPORT ANY CONFLICTS OR OMISSIONS TO THE ARCHITECT FOR CLARIFICATION PRIOR TO SUBMITTING A BID OR PROPOSAL TO COMPLETE THE WORK.
- CONSIDERATION WILL NOT BE GRANTED FOR ANY ALLEGED MISUNDERSTANDINGS AS TO THE DESIGN/INTENT OF THE PROJECT. AMOUNT AND / OR SCOPE OF WORK TO BE PERFORMED. TENDER OF PROPOSAL SHALL CONSTITUTE FULL AGREEMENT TO THE TERMS AND CONDITIONS INDICATED BY THE CONSTRUCTION DOCUMENTS. SHOULD THE CONTRACTOR FIND DISCREPANCIES OR OMISSIONS IN THE CONSTRUCTION DOCUMENTS OR BE UNABLE AS TO THE INTENT THEREOF, THE CONTRACTOR SHALL IMMEDIATELY OBTAIN CLARIFICATION FROM THE ARCHITECT PRIOR TO SUBMITTING A PROPOSAL FOR THE WORK.
- DO NOT SCALE DRAWINGS. WRITE DIMENSIONS SOBERLY IN CASE OF CONFLICT. CONSULT THE ARCHITECT.
- SUBMIT REQUESTS FOR SUBSTITUTIONS, REASONS OR CHANGES TO THE ARCHITECT FOR APPROVAL PRIOR TO PURCHASE, FABRICATION OR INSTALLATION. SUBSTITUTIONS ARE TO BE APPROVED AS EQUALS OR THE ARCHITECT NO OTHER SUBSTITUTIONS WILL BE ACCEPTED. IF A FINISH OR MATERIAL IS NOT SPECIFICALLY PROVIDED (VARIAS TBD) THE OWNER SHALL HAVE THE ABILITY TO SELECT FROM THE MANUFACTURER'S FULL RANGE OF FINISHES AT NO ADDITIONAL COST.
- ALL EXISTING ITEMS NOT NOTED TO BE REMOVED ARE TO REMAIN AND TO BE PROTECTED AS NECESSARY.
- ALL UTILITY LOCATIONS SHOWN ARE APPROXIMATE. CONTRACTOR SHALL VERIFY ALL LOCATIONS BEFORE BEGINNING WORK AS REQUIRED BY APPLICABLE LAWS AND REGULATIONS.
- CONTRACTOR SHALL ALSO PROVIDE BARRIERS, WARNING SIGNS, LIGHTS AS REQUIRED MAINTAINING A MINIMUM LEVEL OF TEMPERED SAFETY IN AREAS ADJACENT TO THE SITE.
- GENERAL CONTRACTOR TO PREPARE FINISH CLEAN UP.
- UNDEVELOPED AREAS TO BE FINISHED. UNLESS OTHERWISE NOTED, MAINTAIN DIMENSIONS MARKED CLEAR. ALLOW FOR THICKNESS OF FINISHES.
- PROTECT AREA OF WORK AND ADJACENT AREAS FROM DAMAGE. CONTRACTOR TO REPAIR ANY DAMAGE THAT MAY OCCUR DURING CONSTRUCTION.
- ALL MATERIALS EXPOSED WHEN FINISHES ARE REMOVED AND ITEMS ATTACHED OR MOUNTED TO WALLS OR CEILING.
- NON-CONDUCTIVE INSULATING MATERIALS INSTALLED WITHIN WALL SHALL HAVE A FLAME SPREAD INDEX OF NOT MORE THAN 75 AND A SMOKE DEVELOPED INDEX OF NOT MORE THAN 450.
- INSULATING MATERIALS WHICH ARE SUBJECT TO DIRECT EXPOSURE TO POTENTIAL FIRE ON THE INSIDE OF THE BUILDING DUE TO INSTALLATION IN UNCEILINGED SPACES SHALL HAVE A FLAME SPREAD INDEX OF NOT MORE THAN 25 AND A SMOKE DEVELOPED INDEX OF NOT MORE THAN 450.
- MATERIALS EXPOSED WHEN FINISHES ARE REMOVED AND ITEMS ATTACHED OR MOUNTED TO WALLS OR CEILING SHALL HAVE A FLAME SPREAD INDEX OF NOT MORE THAN 25 AND A SMOKE DEVELOPED INDEX OF NOT MORE THAN 450 AS DETERMINED IN ACCORDANCE WITH ASTM E 84.
- CONFORM TO ANY SCHED. AND SPEC. AND ITEMS ATTACHED OR MOUNTED TO WALLS OR CEILING. PHOTOGRAPHY, RECORDING OR BY ANY INFORMATION STORAGE OR RETRIEVAL SYSTEM.



ST. BENEDICT CHURCH RESTROOM RENOVATION
3980 MAIN ST.
AMHERST, NY 14226

CODE SUMMARY

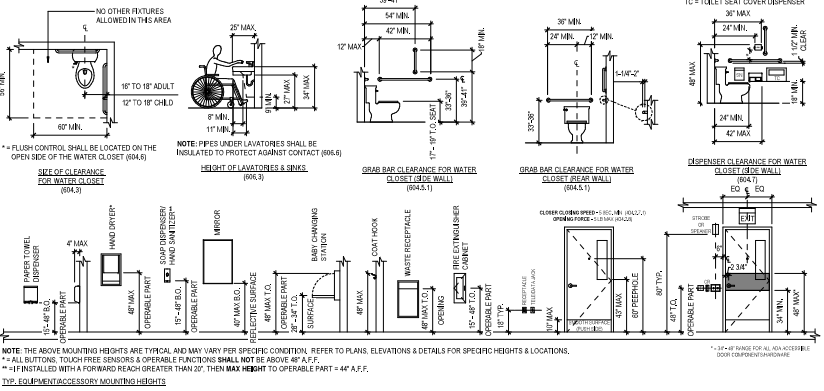
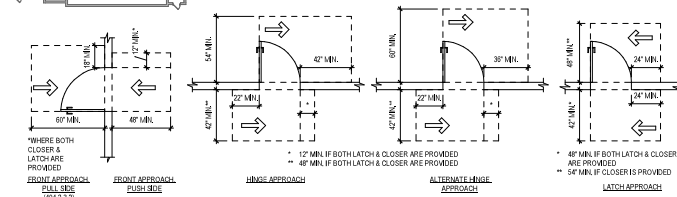
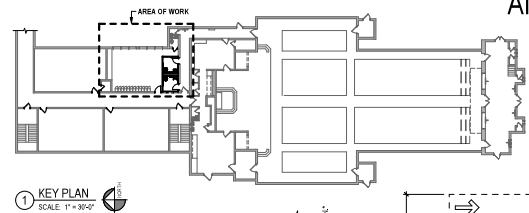
AUTHORITY HAVING JURISDICTION	TOWN OF AMHERST
CLASSIFICATION OF WORK	ALTERATIONS LEVEL 2
CHAPTER 3 USE AND OCCUPANCY CLASSIFICATION	
OCCUPANCY	E-EDUCATION
CHAPTER 8 TYPES OF CONSTRUCTION	
TYPE	IB - NON-COMBUSTIBLE
CHAPTER 9 INTERIOR FINISHES	
CLASS	0' MIN.
CHAPTER 9 FIRE PROTECTION SYSTEMS	
SPRINKLER SYSTEM	NON-SPRINKLED
WATER SUPPLY	NON-METROPOL.
FIRE ALARM DETECTION	N/A
CHAPTER 10 MEANS OF EGRESS	
ADDITION OF OR RESTROOMS DOES NOT IMPACT THE EGRESS PATH, COMMON PATH, OR EGRESS DISTANCE FROM EXISTING CLASSROOM OR NEW RESTROOM.	
CHAPTER 11 ACCESSIBILITY	
ACCESSIBLE ROUTE PROVIDED. RESTROOMS ACCESSIBLE.	

2020 EXISTING BUILDING CODE OF NEW YORK STATE CHECKLIST

Project:	St. Benedict's Restroom Renovation
Location:	3980 Main Street, Buffalo, NY 14226
Occupancy Group:	E - Education (Area of Work)
Construction Type:	IB
Classification of Work:	Alterations Level II
Compliance Method:	2024 ASHRAE Compliance Method
Date:	12/24/2024
Reviewer:	NPG

EXISTING BUILDING CODE OF NEW YORK STATE (EBC) COMMERCIAL & MULTIPLE DWELLING OCCUPANCIES

Topic	Code Section	Required or Allowed	Actual
PROVISIONS FOR ALL			
COMPLIANCE WITH ACCESSIBILITY	EBC-301.5	MUST COMPLY WITH ICC 117.1.2009	COMPLIES
MAINTENANCE OF FACILITIES	EBC-302.2	MAINTAIN ACCESSIBILITY	COMPLIES
EXTENT OF APPLICATION	EBC-302.3	SHALL NOT REDUCE ACCESSIBILITY	COMPLIES
ALTERATIONS	EBC-303.8	MUST COMPLY WITH NYSC CHAPTER 11	COMPLIES
TOILET ROOMS	EBC-305.8.10	PROVIDE ACCESSIBLE	COMPLIES
THRESHOLDS	EBC-305.8.14	3/4" MAX W/ BEVEL	COMPLIES
REPAIRS			
FIRE PROTECTION	EBC-401	MAINTAIN LEVEL	COMPLIES
MEANS OF EGRESS	EBC-404	MAINTAIN LEVEL	COMPLIES
STRUCTURAL	EBC-405	MAINTAIN LEVEL	COMPLIES
ALTERATIONS - LEVEL 1			
FORMS	EBC-701	MAINTAIN LEVEL OF SAFETY	COMPLIES
BUILDING ELEMENTS & MATERIALS	EBC-702	COMPLY WITH NYSC	COMPLIES
INTERIOR FINISHES	EBC-702.1 THRU 702.2	COMPLY WITH NYSC	COMPLIES W/ CH NYSC
FIRE PROTECTION	EBC-703	MAINTAIN LEVEL OF SAFETY	COMPLIES
MEANS OF EGRESS	EBC-704	MAINTAIN LEVEL OF SAFETY	COMPLIES
ENERGY CONSERVATION	EBC-707	NEW YORK TO COMPLY WITH EBC	COMPLIES
ALTERATIONS - LEVEL 2			
INTERIOR FINISHES	EBC-802.1	COMPLY WITH NYSC	COMPLIES
SPRINKLER SYSTEMS	EBC-803.1	APPROVED SYSTEM REQUIRED	PROVIDED
FIRE ALARM DETECTION	EBC-804.1	APPROVED SYSTEM REQUIRED	PROVIDED
CARBON MONOXIDE DETECTION	EBC-804.1	APPROVED SYSTEM REQUIRED	PROVIDED
NUMBER OF EXITS	EBC-805.3	WORK AREAS DOES NOT IMPACT GROSS	COMPLIES
DOOR SWEEP	EBC-805.4.2	"ZERO" DOOR DIRECTION OF TRAVEL	COMPLIES
DOOR CLOSING	EBC-805.4.3	"ZERO" @ EXIF ENCLOSURES	COMPLIES
ELECTRICAL - NEW	EBC-807.1	COMPLY WITH NFPA 70	COMPLIES
MECHANICAL	EBC-808	LOCAL EXHAUST FRESH INSUFF REC'D	COMPLIES
FURNISHING	EBC-809	COMPLY WITH NYSC	COMPLIES
ENERGY CONSERVATION	EBC-810	NEW YORK TO COMPLY WITH NYSC	COMPLIES



2) ADA DETAILS SCALE: 1/8" = 1'-0"

DRAWING INDEX

#	SHEET NAME	DOCUMENT PAGE
ARCHITECTURAL		
A1	GENERAL NOTES, DEMOLITION PLANS	1
A2	CONSTRUCTION PLAN, RCP, WALL TYPES, FINISHES, & DETAILS	2
MEP		
MEP-1	MEP PLANS, DETAILS, & NOTES	3
MEP-2	MEP SPECIFICATIONS	4

GENERAL DEMOLITION NOTES

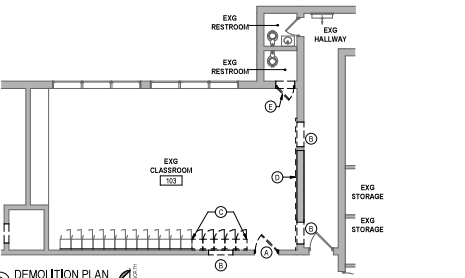
- PROTECT EXISTING WALLS, FLOORS AND ANY OTHER ITEMS TO REMAIN DURING DEMOLITION.
- ALL DEMOLISHED MATERIALS SHALL BE REMOVED FROM THE SITE AND DEPOSITED OFF SITE IN ACCORDANCE WITH ALL APPLICABLE REGULATIONS AND AUTHORITIES HAVING JURISDICTION.
- DEMOLITION CONTRACTOR SHALL PROVIDE DUMPSTERS AND MEANS OF MATERIAL REMOVAL FROM SITE IN ACCORDANCE WITH ALL APPLICABLE REGULATIONS AND AUTHORITIES HAVING JURISDICTION.
- DEMOLITION CONTRACTOR SHALL CARRY FORTH DAILY CLEAN UP ON SITE.
- DEMOLITION CONTRACTOR SHALL PROVIDE PROOF OF INSURANCE TO OWNER.
- DEMOLITION CONTRACTOR SHALL BE RESPONSIBLE FOR CONTINUOUS ON SITE SUPERVISION.
- THE ELECTRICAL CONTRACTOR SHALL TURN OFF POWER TO AREAS OF WORK AND BE SAFE PRIOR TO DEMOLITION EFFORTS.
- THE DEMO CONTRACTOR SHALL SHORE AND BRACE ANY STRUCTURAL COMPONENT INVOLVED IN DEMOLITION THAT COULD AFFECT THE STRUCTURAL INTEGRITY OF THE BUILDING.
- ANY ITEM NOT SPECIFICALLY CALLED OUT TO BE REMOVED OR RELOCATED, BUT NECESSARY TO DO AS PART OF THE PROJECT, SHALL BE REMOVED AND STORED ON SITE AS REQUIRED.
- DOORS AND WINDOWS NOT DAMAGED ARE TO REMAIN.
- THE DEMO CONTRACTOR SHALL BE RESPONSIBLE FOR TEMPORARY PROTECTION AND BARRIERS TO MAINTAIN A SAFE WORKING ENVIRONMENT.

HAZARDOUS MATERIAL NOTES

- IF THE DEMOLITION CONTRACTOR OR ANY OTHER TRADE SUSPECTS THEY HAVE ENCOUNTERED HAZARDOUS MATERIALS, THEY SHALL STOP WORK IMMEDIATELY AND NOTIFY THE OWNER AND ARCHITECT.
- THE GENERAL CONTRACTOR IS RESPONSIBLE FOR TESTING ALL QUESTIONABLE MATERIALS INVOLVED IN THIS PROJECT.
- SUBCONTRACTORS ARE REQUIRED TO PROVIDE A LIST OF MATERIALS RELATED TO EACH TRADE THAT IS OF A SUSPICIOUS NATURE AND REQUIRE TESTING.
- HAZARDOUS MATERIALS REMOVAL, INCLUDING BUT NOT LIMITED TO MOLD, LEAD PAINT, AND ASBESTOS, IF ABSTAINERS IS REQUIRED IT SHALL BE PERFORMED BY A LICENSED ABATEMENT CONTRACTOR AND SHALL BE PERFORMED PER ALL LOCAL, STATE AND NATIONAL CODES.

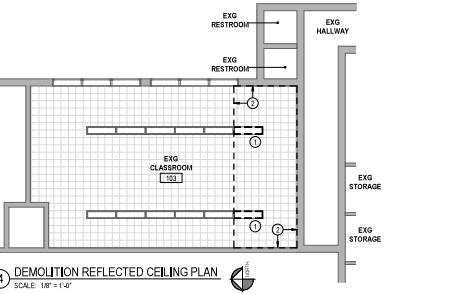
DEMOLITION PLAN KEY NOTES

- CAREFULLY REMOVE EXISTING DOOR AND FRAME AND STORE ON SITE AT DIRECTION OF OWNER FOR REINSTALLATION.
- SAFELY EXISTING WALL FOR NEW DOOR MASONRY WORKING. COORDINATE SIZES WITH DOOR SCHEDULE. DEMOLITION SHALL MINIMIZE DAMAGE AND IMPACT TO EXISTING GLAZED TILES.
- CAREFULLY REMOVE PORTION OF EXISTING WALL WORK TO ACCOMMODATE NEW RESTROOMS AND DOOR OPENINGS. STORE ON SITE AT DIRECTION OF OWNER.
- REMOVE EXISTING BACKBOARD, DRY ERASE BOARD, PROJECTOR SCREEN, FRAME, PA SPEAKER, ETC. FOR REMOUNTING ON RESTROOM WALL. STORE ON SITE AT DIRECTION OF OWNER.
- CAREFULLY REMOVE EXISTING DOOR FROM FRAME, PREPARE FRAME FOR REINSTALLATION OF REVERSED DOOR.



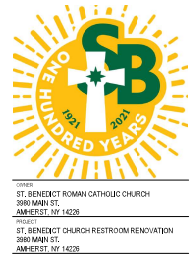
DEMOLITION REFLECTED CEILING PLAN KEY NOTES

- DISCONNECT AND REMOVE BIFIXTURE FROM EACH ROW OF LIGHT FIXTURES AS INDICATED TO ALLOW FOR RESTROOM CONSTRUCTION. MIRROR CIRCLES AS REQUIRED.
- DASHED LINE INDICATES EXTENT OF EXISTING CEILING TO BE DEMOLISHED AND REMOVED AS INDICATED.



DEMOLITION REFLECTED CEILING PLAN

SCALE: 1/8" = 1'-0"



Contact:
O: 716.884.0259
F: 716.884.0154
S: SCHEIDARCH.COM

ISSUE DATE	DESCRIPTION
01/26/2024	BD SET

FOR REFERENCE ONLY
NOT FOR CONSTRUCTION

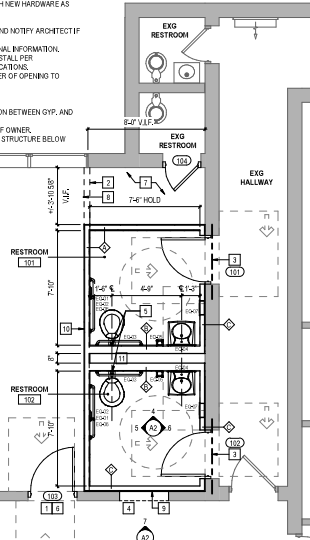
The drawings are prepared under the United States Copyright Law, and the copyright of these drawings shall remain in the sole ownership of the architect unless otherwise indicated on the drawings.

PROJECT TITLE:
GENERAL NOTES, DEMOLITION PLANS

PROJECT NUMBER:
2024-86
JOB DATE:
12/26/2024 1:06:13 PM
SHEET:
8

CONSTRUCTION PLAN KEY NOTES

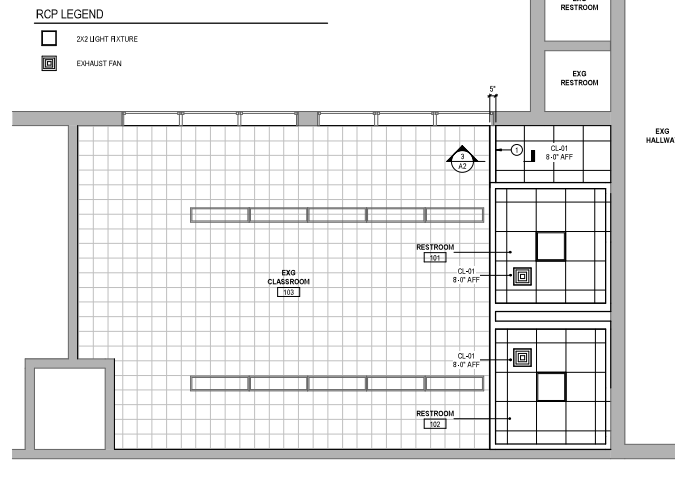
- 1. NEW LOCATION OF RELOCATED DOOR, USE EXISTING DOOR PANEL IN NEW OPENING AND FRAME. PROVIDE WITH NEW HARDWARE AS SCHEDULED.
2. SOFFIT ABOVE PER OP AND DETAIL.
3. STEEL LINTE ASSEMBLY, SEE DETAIL FOR ADDITIONAL INFORMATION. VERIFY WALL CONSTRUCTION IN FIELD AND NOTIFY ARCHITECT IF DIFFERING CONDITIONS PRESENT.
4. PROVIDE OPENING WITH MILLWORK TO CONCEAL PREVIOUS MASONRY OPENING. SEE ELEVATION FOR ADDITIONAL INFORMATION.
5. PROVIDE FIRE-TREATED WOOD BLOCCING AND ALL REQUIRED DIMENSIONS FOR WATER CLOSET CABINETS. INSTALL PER MANUFACTURER'S RECOMMENDATIONS. COORDINATE WITH PLUMBING CONTRACTOR AND EQUIPMENT SPECIFICATIONS.
6. PROVIDE NEW MASONRY FRAME AND REINFORCE EXISTING CLASSROOM DOOR AND HARDWARE. TRIM PER METRIC TYPE OF OPENING TO MATCH EXISTING.
7. PROVIDE NEW 1/4" FLOORING THE AREA TRANSITION TO ALIGN WITH NORTH FACE OF SOFFIT AND WALL.
8. INSTALL TRANSITION STRIP BETWEEN EXISTING CARPET AND NEW FLOOR FINISH.
9. PROVIDE GYP SOFFIT WITH OPENING TO ENCLOSE FURRED WALL. PATCH JAMES AS REQUIRED TO CREATE TRANSITION BETWEEN GYP. AND GLAZED TILE.
10. REINSTALL TAGBOARD, DRY BRASE BOARD, PROTECTOR SCREEN, FRAME PA SPLICER, ETC. AT DIRECTION OF OWNER.
11. CONTRACTOR SHALL VERIFY IN FIELD LOCATION OF SANITARY DROPP AND COVERED IN FIELD TO ENSURE FLOOR STRUCTURE BELOW DOES NOT INTERFERE WITH SYSTEM.



REFLECTED CEILING PLAN KEY NOTES

- 1. NEW SOFFIT PER DETAIL.

RCP LEGEND



GENERAL CONSTRUCTION NOTES

- 1. ALL STUDS, CEILING FURRING, AND FRAMING MEMBERS SHALL BE PLACED SO AS TO AVOID INTERFERENCE WITH CASEWORK, RECESSED LIGHTING FIXTURES, PIPING, ETC.
2. THE OWNER'S WRITTEN AUTHORIZATION IS REQUIRED BEFORE ANY WORK INVOLVING ADDITIONAL COSTS IS PERFORMED.
3. ALL MISCELLANEOUS NAILS, HANGERS, AND STAPLES, OLD WIRES AND CONDUITS, MISCELLANEOUS ELECTRICAL AND TELEPHONE EQUIPMENT WILL BE REMOVED FROM ANY AREAS EXPOSED TO NEW WORK.
4. ALL CEILING TILE WILL BE FIELD REPAIRED WITH PATTERN RUNNING IN SAME DIRECTION.
5. ALL SWITCHES AND RECEPTACLES TO BE INSTALLED AT HEIGHTS AS PER AIA CODE.
6. GENERAL CONTRACTOR SHALL HAVE THE RESPONSIBILITY TO MEET THE BUILDING INSPECTOR AT THE SITE FOR APPROVALS.
7. ALL DIMENSIONS WILL BE FIELD VERIFIED BY INDIVIDUAL CONTRACTORS.
8. ARCHITECT WILL BE RESPONSIBLE FOR THE QUALITY OF FINISHES.
9. GO TO ENSURE THAT GREEN BOARD IS USED ON ALL WET WALLS.
10. ALL WORK SHALL BE CONTRASTED TO CONSTRUCTION WITH THE APPROVED ARCHITECTURAL AND MEP INSTALLATION. CONTRACTOR SHALL VERIFY ANY CHANGES MADE DURING CONSTRUCTION THAT ARE NOT IN COMPLIANCE WITH THE APPROVED PLANS SHALL BE RECORDED BY THE ARCHITECT.
11. ELECTRICAL BOXES TO BE OFFSET AT ALL SOUND RATED PARTITIONS AT A MIN OF 2" O.C. PROVIDE ONE STD. MIN BETWEEN RESIST BOXES. INSTALL ACCORDING TO SOUND AROUND OPENINGS.
12. STUD GABLE TO BE A MIN OF 20" WITH 1" SW. FLANGE WIDTH IN ACCORDANCE WITH ASTM REQUIREMENTS C 88 UNLESS OTHERWISE NOTED.
13. HEIGHT LIMIT OF STUDS TO BE IN ACCORDANCE WITH AIA REQUIREMENTS AND GYPSUM ASSOCIATION RECOMMENDATIONS.
14. IN WALL BLOCCING AND BACKING SHALL BE INSTALLED IN ALL ASSEMBLIES AS REQUIRED TO MAINTAIN SPECIFIED FIRE RATINGS. TO COMPLY WITH ACCESSIBILITY CODE REQUIREMENTS.
15. ALL THRESHOLDS AT DOORWAYS TO BE 3" MAX. HEIGHT, SEVERED WITH 1/2" MAX. SLOPE.
16. GO TO PROVIDE FLOOR BLOCCING AS REQUIRED FOR EQUIPMENT INSTALLATION.
17. GO TO ENSURE THAT ALL EXISTING EXIT DOORS & INTERIOR DOORS SHALL COMPLY WITH CODE LOCKS & LATCHES REQUIREMENTS.
18. AT ALL PARTITIONS, GYP, CEILING & GENERAL ITEMS ASSOCIATED WITH DEMOLITION - GO TO PLASTER PATCH AND SHIM COAT ALL REMAINING SURFACES SMOOTH & MAKE PLUMB. REMOVE & CLEAN ANY REMOVED RECUR OF PARTITION. MINOR WALLS AND CONNECTORS.
19. GENERAL CONTRACTOR SHALL REMOVE ALL DEBRIS & BROOD SWEEP FINISHES AT THE END OF EACH WORK DAY.
20. GENERAL CONTRACTOR SHALL PROVIDE ANY ACCESS PANELS, IF REQUIRED FOR ELECTRICAL, MECHANICAL, PLUMBING AND/OR DRAINAGE PIPES, LOCATIONS AND SIZES) TO BE PROVIDED BY THE ARCHITECT.
21. ALL DIMENSIONS ARE APPROXIMATE BASED ON RECORD DRAWINGS. FIELD OBSERVATIONS AND OTHER INFORMATION AVAILABLE. G.C. SHALL VERIFY WALL PARTITION LOCATION WITH EXISTING ELEMENTS FOR CORRECT PRIOR TO CONSTRUCTION FIELDS AND NOTIFY ARCHITECT.
22. PRODUCTS AND MATERIALS SHALL BE INSTALLED WITH STRICT ACCORDANCE TO THE MANUFACTURER'S RECOMMENDATION INSTALLATION INSTRUCTIONS AND SPECIFICATIONS.
23. G.C. SHALL PATCH AND REPAIR FLOOR SLAB AS REQUIRED TO RECEIVE NEW FLOOR FINISHES. G.C. SHALL VERIFY FIELD CONDITIONS AND SUB-ELEMENTS PRIOR TO FLOOR MATERIAL INSTALLATION.



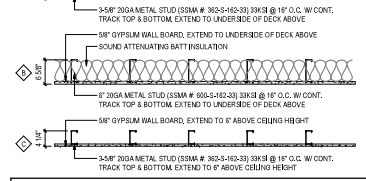
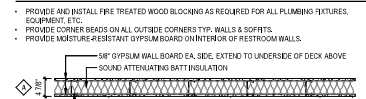
PROJECT: ST. BENEDICT ROMAN CATHOLIC CHURCH 3800 MAN ST. AMHERST, NY 14208
CLIENT: ST. BENEDICT CHURCH RESTROOM RENOVATION 3800 MAN ST. AMHERST, NY 14208



Contact: O. 716.884.0259
F. 716.884.0114
SCHEDA@AOL.COM

CONSTRUCTION PLAN SCALE 1/4" = 1'-0"

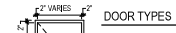
WALL TYPES LEGEND



DOOR SCHEDULE

Table with columns: #, W, H, TYP, MAT, FRM, GLSS, HDWR, COM. Lists door specifications for 101, 102, 103, and 104.

DOOR INFORMATION



DOOR TYPES

D1 SCW SOLID CORE WOOD DOOR, 5-PLY CONSTRUCTION WITH STILES & RAILS BUNGED TO CORE. HARDWOOD EDGES TO MATCH FACE VENEER. FACTORY FINISHED WITH STAIN AND VARNISH. SPECIES TBD. GO TO PROVIDE COLOR/PERFECT TO ARCHITECT FOR APPROVAL.

FRAME TYPES

F1 HM 1 1/2 GA. HOLLOW METAL FRAME, MASONRY TYPE, MN (3) ANCHORS PER JAMB.

DOOR HARDWARE TYPES

- 1. ALL HARDWARE SHALL MATCH OWNER'S STANDARD UNLESS NOTED OTHERWISE.
2. ALL DOOR LEVERS SHALL BE SOLID, NON-SERIES (RH) LEVER.
3. OPERABLE SIDE OF LOCKSET SHALL BE LOCATED IN THE DIRECTION OF EGRESS.
4. COORDINATE LEVER REQUIREMENTS WITH OWNER.
5. PROVIDE DOOR SLIDERS ON FRAMES.

H1 PRIVACY SET (RESTROOMS)

- (1) 1/2" PWB BUTT FINISHES - STAINLESS FIBER
(2) PRIVACY LOCK - SOLID HARDWARE BATHROOM PRIVACY LOCK
(3) SURFACE MOUNTED CLOSER - LOW RISE HEAVY DUTY CLOSER
(4) CAST ALUMINUM CLOSER WITH METAL COVER
(5) WALL STOP - HICKWOOD # 414
(6) STAINLESS STEEL NICK PLATE ON PUSH SIDE

H2 CLASSROOM SET

- (1) 1/2" PWB BUTT FINISHES - STAINLESS FIBER
(2) CLASSROOM LOCK - SOLID HARDWARE CLASSROOM LOCK
(3) COMMERCIAL GRADE HEAVY DUTY LEVER
(4) WALL STOP - HICKWOOD # 414
(5) STAINLESS STEEL NICK PLATE ON PUSH SIDE
NOTE: HARDWARE SHALL MATCH OWNER'S STANDARD

ROOM FINISH SCHEDULE table with columns: #, NAME, AREA, MATL, BASE, WALLS, CEILING, HEIGHT, COMMENTS. Lists finishes for rooms 101, 102, 103, and 104.

FINISHES LEGEND

NOTE: ALL WALL AND CEILING FINISHES SHALL BE CLASS A RATED PER ASTM E 84.
FLOORING: F1-01 LUXURY VINYL TILE MFG: TARKETT STILE: SHERRIN WILLIAMS STYLE: DURATION INTERIOR ACRYLIC LATEX COLOR: SW 700 PURE WHITE FINISH: SATIN
CEILING: C1-01 LAY-IN CEILING PANELS MFG: USG SERIES: ARCADIA HETEROVARIABLE 340 COLOR: FLAT WHITE 550 EDGE: SO
NOTE: ALL LAY-IN CEILING PANELS SHALL BE HELD IN PLACE DOWN BY 1/8" (2x4) DOWNS SYSTEM IN FLAT WHITE 550
WALL: W1-01 1/2" VINYL BASE MFG: 300PC STILE: 700 SERIES 6" COVE BASE COLOR: 700 DREAM GRAY
PAPER: P1-01 MFG: SHERRIN WILLIAMS STYLE: DURATION INTERIOR ACRYLIC LATEX COLOR: SW 700 PURE WHITE FINISH: SATIN
WALL SURFACE: W1-01 REINFORCED POLYETHYLENE MFG: MARLITE STILE: SYMMETRY SMART SEAM PATTERN: T80 COLOR: T80 NOTE: GROUT MATCH FIELD COLOR

GENERAL FINISH NOTES

- 1. NO CHANGE OR SUBSTITUTIONS WILL BE MADE TO THE FOLLOWING FINISHES UNLESS DIRECTED BY THE OWNER OR ARCHITECT IN THE EVENT OF SUBSTITUTIONS, ALL SUBSTITUTIONS OF FINISHES MUST BE SUBMITTED IN WRITING TO ARCHITECT AND MUST BE APPROVED PRIOR TO CONSTRUCTION.
2. MANY FINISH MATERIALS REQUIRE A SUBSTANTIAL LEAD TIME. IT IS THE RESPONSIBILITY OF THE CONTRACTOR TO ORDER ALL MATERIALS AT THE APPROPRIATE TIME. ANY DELAYS OR SUBSTITUTIONS WILL BE THE RESPONSIBILITY OF THE CONTRACTOR.
3. CONTRACTOR TO SUBMIT SAMPLES TO ARCHITECT AND OWNER PRIOR TO CONSTRUCTION FOR APPROVAL. ACCOUNTING FOR PROPER LEAD TIME. LABEL EACH SAMPLE TO MATCH FINISH LEGEND DESIGNATION. INCLUDE PROJECT DATA, SEAMING TECHNIQUE, AND SHEET DRAWINGS PRIOR TO PROCUREMENT OF MATERIALS. FINISH THAT IS INSTALLED WITHOUT ARCHITECT'S APPROVAL MAY BE REUSED TO REPAIR DAMAGE TO THE GENERAL CONTRACTOR.
4. CONTACT THE ARCHITECT FOR CLARIFICATION IN THE EVENT OF CONTRACTORY INFORMATION BETWEEN FINISHES. LEGEND AND/OR SPECIFICATIONS.
5. REFER TO FINISH SCHEDULE AND PLAN FOR GENERAL FINISHES.
6. IF COLOR OR FINISH NOT SPECIFIED (TBD), THE OWNER SHALL BE ABLE TO CHOOSE FROM THE SPECIFIED MANUFACTURER'S FULL LINE OF COLORS OR FINISHES.
7. REFER TO ANSI 111.1 FOR MOUNTING HEIGHTS AND FLOOR CLEARANCES.
8. CLEAN JOB SITE REMOVING SCRAP, DEBRIS AND WASTE MATERIALS ONLY.

FLOOR FINISH NOTES

- 1. GO TO DETERMINE TAKE OFF AMOUNTS FOR ALL CARPET AND ADHESIVE REQUIREMENTS FOR THE PROJECT.
2. INSTALL DIRECTIONAL FLOORING ORIENTED AS SPECIFIED IN THE FINISH PLAN.
3. ALIGN TRANSITION OF FLOOR MATERIALS WITH CENTER OF HINGE IN DOORWAYS. IN A WHIPPED OPENING WITHOUT HINGES, REFER TO FINISH PLANS FOR TRANSITION LOCATION.
4. PROVIDE MANUFACTURER'S RECOMMENDATIONS FOR TRANSITIONS BETWEEN DIFFERENT FLOORING MATERIALS FOR ARCHITECT'S APPROVAL. TRANSITIONS SHALL BE 1/2" WITH BEVEL MAX.

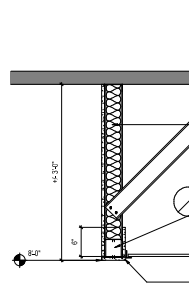
WALL/DOOR FINISH NOTES

- 1. PROVIDE TILE INSIDE, OUTSIDE CORNER TRIM PIECES. PROVIDE 45 DEGREE MITER AT ALL OUTSIDE CORNERS (3/4" TILE TRIM PIECE IS AVAILABLE).
2. FINISHING STRIPS SHOULD BE USED AT ALL EXPOSED FLOOR FINISH EDGES (BRUSHED STAINLESS STEEL).
3. ALL GYP BOARD WALL FINISH ASSUMED TO BE LEVEL 4 UNL.
4. GO TO INSTALL BASE ON ALL WALLS UNLESS OTHERWISE NOTED.

CEILING FINISH NOTES

- 1. PAINT UNDERSIDE AND FACE OF SOFFIT UNL. PAINT COLOR TO BE PER FRESH SCHEDULE.
2. REFERENCE REFLECTED CEILING PLANS FOR ADDITIONAL SOFFIT AND CEILING FINISH INFORMATION.
3. ALL GYP BOARD CEILING FINISH ASSUMED TO BE LEVEL 4 UNL.

SOFFIT DETAIL SCALE 1/4" = 1'-0"



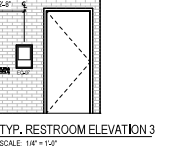
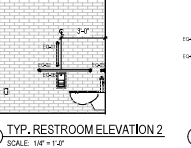
EQUIPMENT SCHEDULE

Table with columns: MARK, QTY, MANUFACTURER, MODEL, DESCRIPTION, COMMENTS. Lists equipment for restrooms and classrooms.

PROVIDE FIRE-TREATED BLOCCING AS REQUIRED

COORDINATE FIXTURES WITH OWNER'S STANDARD

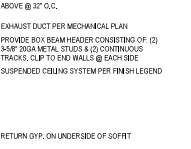
SEE ADD DETAILS FOR ADDITIONAL MOUNTING INFORMATION



EXISTING CEILING



LINTEL ASSEMBLY DETAIL SCALE 1/4" = 1'-0"



ISSUE DATE: 01/26/2024 BID SET

FOR REFERENCE ONLY NOT FOR CONSTRUCTION

FOR REFERENCE ONLY NOT FOR CONSTRUCTION

CONSTRUCTION PLAN, RCP, WALL TYPES, FINISHES, & DETAILS

PROJECT NUMBER: 2024-008
DATE: 1/26/2024 10:13 PM
SCALE: A2



PROJECT
ST. BENEDICT ROMAN CATHOLIC CHURCH
380 MAIN ST.
AMERSIT NJ 07001

PROJECT
ST. BENEDICT CHURCH RESTROOM RENOVATION
380 MAIN ST.
AMERSIT NJ 07001



CONTACT
O. 718.884.0559
F. 718.884.0559
E. SCHEID@A.COM

ISSUE DATE DESCRIPTION
1 01/26/24 BID SET

NOT TO SCALE

FOR REFERENCE ONLY
NOT FOR CONSTRUCTION

THIS DRAWING IS PREPARED UNDER THE UNITED STATES COPYRIGHT LAW AND IS THE PROPERTY OF SCHEID ARCHITECTURAL. NO PART OF THIS DRAWING IS TO BE REPRODUCED OR TRANSMITTED IN ANY FORM OR BY ANY MEANS, ELECTRONIC OR MECHANICAL, WITHOUT PERMISSION IN WRITING FROM SCHEID ARCHITECTURAL.

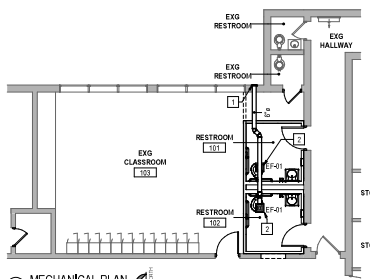
PROJECT TITLE
MEP PLANS, DETAILS, & NOTES

PROJECT NUMBER
2024-045

DATE
12/26/24 10:16:15 AM

SCALE
AS SHOWN

MEP-1



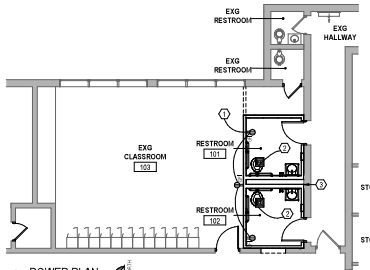
1 MECHANICAL PLAN
SCALE: 1/8" = 1'-0"

MECHANICAL PLAN KEY NOTES

- PROVIDE EXTRUDED ALUMINUM HORIZONTAL BLADE COVERS FOR WIND-DRIVEN PANS PROVIDED WITH INSET SCREENS AND BACKDRIFT DAMPERS. INVESTIGATE EXISTING WALL CONSTRUCTION AND SELECT APPROPRIATE LOWER DEPTH FLASH AND SEAL. BRUSH TOP AND BRUSH OF PENETRATION. INSTALL PER MANUFACTURER'S RECOMMENDATIONS. FINISH TBD (MATCH EXTERIOR STONE). PROVIDE ARCHITECT WITH CUT SHEET PRIOR TO WORK EFFORTS.
- EXHAUST FAN PER SCHEDULE. INTERLOCK TO LIGHT SWITCH. SWITCH SHALL ENERGIZE FAN.

MECHANICAL LEGEND

CEILING EXHAUST FAN PER SCHEDULE



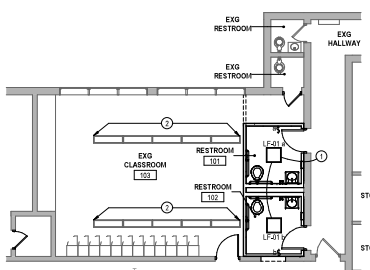
2 POWER PLAN
SCALE: 1/8" = 1'-0"

POWER PLAN KEY NOTES

- NEW OUTLETS AND COVER PLATES SHALL MATCH EXISTING FINISH COLOR.
- ENERGIZE NEW RECEPTACLES FROM AVAILABLE EXISTING SPARE ON EXISTING PANEL. VERIFY CAPACITY IN CIRCUIT AND PANEL PRIOR TO WORK EFFORTS.
 - ENERGIZE NEW EXHAUST FAN FROM AVAILABLE EXISTING SPARE ON EXISTING PANEL.
 - DISCONNECT EXISTING RECEPTACLE FROM EXISTING CIRCUIT.

ELECTRICAL LEGEND

- DUPLEX RECEPTACLE
- GROUND FAULT INTERRUPTED DUPLEX RECEPTACLE
- 1" MOUNTING HEIGHT AFF (18" TYP.)
- LIGHT TYPE LIGHT FIXTURE PER SCHEDULE
- * INDICATES FIXTURE TYPE
- % INDICATES SWITCHING
- HOME RUN TOP PANEL
- % INDICATES PANEL
- % INDICATES CIRCUIT NUMBER
- SINGLE LIGHT SWITCH



3 LIGHTING PLAN
SCALE: 1/8" = 1'-0"

LIGHTING PLAN KEY NOTES

- NEW SWITCHES AND COVER PLATES SHALL MATCH EXISTING FINISH COLOR.
- PROVIDE DIMMER AND VACANCY SENSOR LIGHT SWITCHES. LIGHT TO BE TURNED ON BY OCCUPANT MANUALLY. SENSOR TO DE-ENERGIZE AFTER SET TIME AUTOMATICALLY. INTERLOCK WITH EXHAUST FAN.
- ENERGIZE NEW LIGHT FIXTURES FROM AVAILABLE EXISTING SPARE ON EXISTING PANEL.
- EXISTING FIXTURES TO REMAIN.

GENERAL LIGHTING NOTES

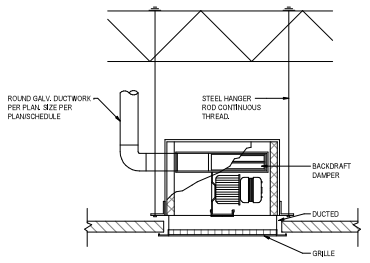
- ALL WORK SHALL CONFORM WITH GENERAL ELECTRICAL SPECIFICATIONS.
- ALL CONDUIT RUNS SHOWING DRAWING ARE LABORATORY CONTRACTOR TO PROVIDE FULL BOXES, FITTINGS, ETC. TO MAKE A COMPLETE SYSTEM IN ACCORDANCE WITH NATIONAL ELECTRICAL CODE LATEST EDITION.
- BRANCH CIRCUIT WIRING FOR LIGHTING FIXTURE AS INDICATED TO DIAGRAMMATIC CONTRACTOR SHALL DETERMINE THE ACTUAL BRANCH CIRCUIT WIRING REQUIREMENTS NECESSARY TO ACHIEVE THE SWITCHING ARRANGEMENTS INDICATED ON THE DRAWING.
- PROVIDE ARCHITECT WITH PANEL SCHEMATIC OF EXISTING PANEL BEING USED TO ENERGIZE NEW EQUIPMENT FOR APPROVAL PRIOR TO WORK EFFORTS.

EXHAUST FAN SCHEDULE

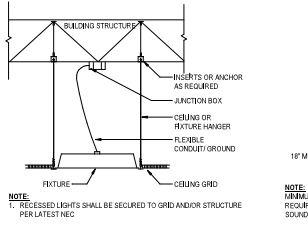
No.	QUANTITY	MFG.	MODEL	CFM	ESP	FAN RPM	DRIVE	MOTOR WATTS	VOLTS	PH	COMMENTS
EX-1	2	GREENHECK	SH400	101 CFM	0.150 in.Hg	870	DIRECT	16.5	230V	1	INTERLOCK WITH LIGHT SWITCH. SWITCH SHALL ENERGIZE FAN.

LIGHT FIXTURE SCHEDULE

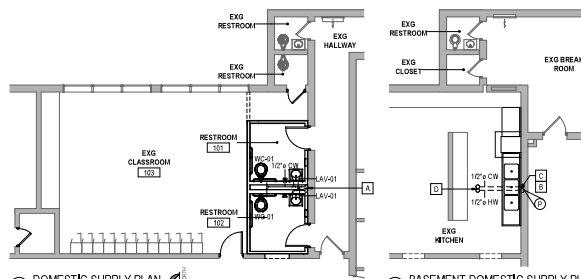
No.	QTY	DESCRIPTION	MFR	MODEL No.	LAMPS	WATTAGE	COMMENTS
LI-41	2	2x2 TROFFER	COOPER	Z2EN4-D2-25-1/4-1/4-84-025-1-2	2500 LUMEN; 4000K LED	25 W	



8 CEILING MOUNTED EXHAUST FAN DETL.
SCALE: NTS



9 RECESSED LIGHT SUSPENSION DIAGRAM
SCALE: NTS

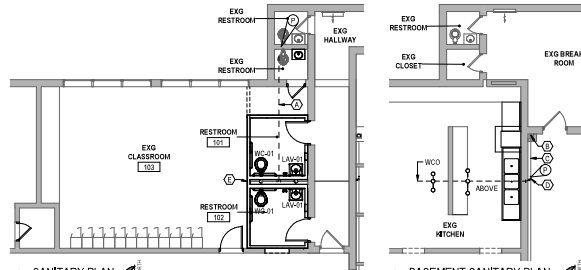


4 DOMESTIC SUPPLY PLAN
SCALE: 1/8" = 1'-0"

WATER SUPPLY PLAN KEY NOTES

- GENERAL NOTES**
- PROVIDE A INSTALL PLUMBING FIXTURES PER FIXTURE SCHEDULE. ALL FIXTURES TO BE INSTALLED PER MANUFACTURER'S RECOMMENDED INSTALLATION INSTRUCTIONS. PROVIDE ALL ACCESSORIES AS REQUIRED TO ALLOW PROPER FUNCTION.
 - PLUMBING CONSTRUCTION SHALL VERIFY EXISTING WATER SUPPLY LINE SIZES AND AVAILABLE PRESSURES. NOTIFY ARCHITECT OF ANY DISCREPANCIES.
 - PROVIDE ARCHITECT WITH SHOP DRAWINGS & SUBMITTALS FOR APPROVAL PRIOR TO WORK EFFORTS.
 - ALL PLUMBING DRAWINGS WERE GENERATED FROM LIMITED FIELD INVESTIGATIONS AS SOURCE DRAWINGS WERE NOT PROVIDED. SCHEID ARCHITECTURAL DOES NOT ASSUME RESPONSIBILITY FOR ITS ACCURACY. ALL PLUMBING LINES SHALL BE LOCATED IN FIELD.

- DOMESTIC HOT & COLD WATER SUPPLY FROM BELOW.
- TAP INTO EXISTING HOT WATER LINE SERVING KITCHEN BELOW. PROVIDE ALL REQUIRED VALVES, EXPANSION TANKS, AND REGULATION AS REQUIRED. ALTERNATE: WATER HEATER SHALL BE LOCATED IN PLUMBING SPACE ABOVE RESTROOM. PROVIDE THEMETEK TANKLESS WATER HEATER. INSTALL PER MANUFACTURER'S RECOMMENDATIONS. PROVIDE WITH ALL REQUIRED ACCESSORIES AND MOUNTING HARDWARE FOR COMPLETE WORKING SYSTEM. ENSURE ALL MAINTENANCE CLEARANCES ARE MET.
- EXISTING ACCESS PANEL. TRACE EXISTING COLD WATER SUPPLY TO POINT OF CONNECTION ABOVE BASEMENT CEILING.
- DOMESTIC HOT & COLD WATER SUPPLY TO FIXTURES ABOVE.



6 SANITARY PLAN
SCALE: 1/8" = 1'-0"

SANITARY PLAN KEY NOTES

- GENERAL NOTES**
- PLUMBING CONTRACTOR SHALL VERIFY ALL SANITARY LINE SIZES AND NOTIFY ARCHITECT OF ANY DISCREPANCIES.
 - ALL SANITARY PIPING SHALL BE RETEDED AT 1/8" PER FOOT MIN.
 - ALL PLUMBING DRAWINGS WERE GENERATED FROM LIMITED FIELD INVESTIGATIONS AS SOURCE DRAWINGS WERE NOT PROVIDED. SCHEID ARCHITECTURAL DOES NOT ASSUME RESPONSIBILITY FOR ITS ACCURACY. ALL PLUMBING LINES SHALL BE LOCATED IN FIELD.

- SANITARY VENT TO CONNECT OVERHEAD TO THE EXISTING RESTROOM MAIN VENT. INVESTIGATE FEASIBILITY AND EXACT CONNECTION POINT IN FIELD. AN AIR ADMITTANCE VALVE MAY BE USED FOR VENTING IN LIEU OF CONNECTION TO EXISTING VENT MAIN. PROVIDE ARCHITECT WITH CUT SHEET.
- SANITARY DROOP FROM SANITARY LINE ABOVE. VERIFY CONDITION AND CAPACITY OF EXISTING PIPE PRIOR TO WORK EFFORTS. NOTIFY ARCHITECT OF UNDESIRABLE CONDITIONS PRESENT.
- EXISTING SANITARY LINE ABOVE BASEMENT CEILING.
- POINT OF CONNECTION OF NEW RESTROOM SANITARY LINE.
- PROVIDE WALL CLEAN OUT WITH STAINLESS STEEL COVER PLATE.

GENERAL PLUMBING NOTES

- ALL NEW WORK SHALL CONFORM TO THE LATEST VERSION OF THE PLUMBING CODE OF NEW YORK STATE, NATIONAL PLUMBING CODES AND ALL OTHER AUTHORITIES HAVING JURISDICTION. OBTAIN PERMITS AND ALL FEES.
- THE PLUMBING CONTRACTOR SHALL ADHERE TO ALL REQUIREMENTS SPECIFIED BY THE OWNER.
- NO AS-BUILT DRAWINGS HAVE BEEN PROVIDED. PLUMBING CONTRACTOR SHALL FIELD VERIFY ALL EXISTING CONDITIONS PRIOR TO SUBMITTING HIS BID. FURTHERMORE THE PLUMBING CONTRACTOR SHALL ALLOW FOR THE EXPLORATION AND LOCATING OF THE EXISTING WASTE AND WATER SYSTEM INSTALLATION CONDITIONS.
- VERIFY AT JOB SITE THE EXACT LOCATION OF EXISTING STRUCTURAL MEMBERS SUCH AS BEAMS, COLUMNS, ETC. TO LOCATE EQUIPMENT AND NEW PIPING. IF DEVIATIONS TO THE DRAWINGS ARE NECESSARY TO MEET STRUCTURAL CONDITIONS, MAKE DEVIATIONS WITHOUT ADDITIONAL COST TO OWNER, ARCHITECT, OR ENGINEER.
- SUBMIT COMPLETE DESCRIPTIVE DATA TO OWNERS REPRESENTATIVE FOR APPROVAL BEFORE ORDERING EQUIPMENT.
- ALL TYPES OF MATERIAL AND EQUIPMENT FOR WHICH STANDARDS HAVE BEEN ESTABLISHED SHALL BE APPROVED OR LISTED AND SHALL BEAR SUCH LABELS. ALL MATERIALS SHALL BE NEW.
- TEST ALL EQUIPMENT AND PRESURE TEST IN THE CONTRACTOR PROPER OPERATION.
- THE OWNER SHALL BE GUARANTEED BY THE PLUMBING CONTRACTOR THAT ANY DEFECTS ARISING IN THE WORK WITHIN ONE YEAR OF THE DATE OF ACCEPTANCE SHALL BE FREE OF CHARGE.
- ALL SLEEVES PENETRATION ETC. SHALL BE SEALED SOID WITH NON-SHRINKING MATERIAL IMMEDIATELY UPON FINISHING THE OPENING WHETHER OR CONDUIT.
- COORDINATE ALL WORK WITH ALL TRADES.
- VERIFY AT JOB SITE ALL GENERAL WORK TO BE DONE AS SPECIFIED AS NOTED OR AS REQUIRED FOR INSTALLATION PRIOR TO SUBMISSION OF BIDS.
- THE PLUMBING CONTRACTOR AND HIS EMPLOYEES SHALL PERFORM THEIR WORK IN A SAFE MANNER AND MAINTAIN ADEQUATE PROTECTION OF THEIR WORK, THE OWNER'S PROPERTY AND ALL PERSONS ON THE SITE FROM INJURY, DAMAGE.
- PORTIONS OF THE WORK WILL BE PERFORMED IN OPERATING AREAS OF THE PROPERTY. THIS WORK SHALL BE COORDINATED WITH THE OWNER AND SHALL BE PERFORMED ONLY WHEN THE OWNER INDICATES THE WORK AREAS AVAILABLE. ALL WORK SHALL BE SCHEDULED SO AS TO CREATE THE LEAST AMOUNT OF INTERFERENCE WITH THE OWNER'S OPERATIONS. ALL OUTAGES SHALL BE SCHEDULED WITH THE OWNER.
- EXPOSED FIXTURE TRIM SHALL BE CHROME PLATED BRASS. PROVIDE INDIVIDUAL STOPS FOR EACH HOT AND COLD WATER CONNECTION TO FIXTURES.
- CONTRACTOR SHALL PAY FOR ALL PUBLIC UTILITY SYSTEM CHARGES AS NEEDED FOR A COMPLETE PROJECT.
- ALL MATERIALS ABOVE CEILING IN PLUMBING SPACE SHALL HAVE A MINIMUM 1/4 HOUR FIRE RATING.
- OUTLET TEMPERATURE OF LAVATORIES IN RESTROOMS NOT TO EXCEED 110 DEG. F.

PLUMBING FIXTURE SCHEDULE

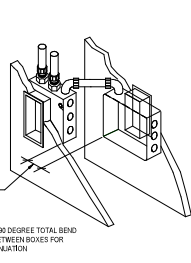
TAG	QTY	MANUFACTURER	MODEL	DRAINAGE SIZE	WATER SIZE	ACCESSORIES	
LI-41	2	AMERICAN STANDARD	MURRO 0555-012	1 1/2"	1 1/2"	1/2"	PROVIDE WITH ACRYLIC SHROUD NO. 052-200, & SELECTORIC FINISH TOUCHLESS FLUSHER TR. 052-200-052-10-10 WITH THERMOSTATIC MIXING VALVE
LI-41	2	AMERICAN STANDARD	AFWALL MILLERUM 405-UR-06	4"	2"	2"	PROVIDE WITH 1/2" CPV FLUSH VALVE, SENSOR OPERATED AMERICAN STANDARD SELECTORIC 1.5 GPH TP-SPRD. ELONGATED WALL HUNG EVERGLAN BOWL, & TUPRY AM120-14-D CARRIER OR APPROVED EQUAL.

PIPING MATERIAL SCHEDULE

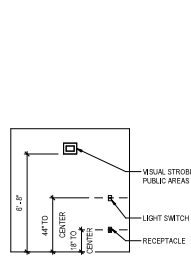
SERVICE	PIPE MATERIALS	FITTINGS	CONNECTION
WATER	TYPE 1 COPPER, PROGRESS	WROUGHT COPPER / PROGRESS	MECHANICAL PRESS
SANITARY (BELOW GRADE)	SERVICE WEIGHT CAST IRON	IRBS S-BEAD	MECHANICAL PRESS
SANITARY (ABOVE GRADE)	SERVICE WEIGHT CAST IRON (DW COPPER (SAN ONLY))	SCHEDULE 40 PVC / HONOR OR W-8 S-SPROUT	SOLVENT WELD / WROUGHT COPPER
SANITARY (IN FLENUM)	SPIC	SPIC	SOLVENT WELD
INDIRECT DRAIN	SCR 40 PVC W/WRAP	SCR 40 PVC W/WRAP	SOLVENT WELD
	DWV COPPER	WROUGHT COPPER	MECHANICAL SOLDER

PIPE INSULATION SCHEDULE

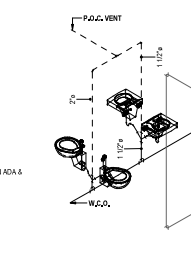
SERVICE	INSULATION THICKNESS FOR PIPE SIZES			
	1" AND LESS	1 1/2" TO 2"	2" TO 4"	OVER 4"
DOMESTIC COLD WATER	1/2"	1"	1"	1"
DOMESTIC HOT WATER	3/8"	1"	1"	1"



10 120 VOLT WALL RECEPTACLE
SCALE: NTS



11 DEVICE HEIGHT INSTALLATION
SCALE: NTS



12 WASTE / VENT ISO
SCALE: NTS

